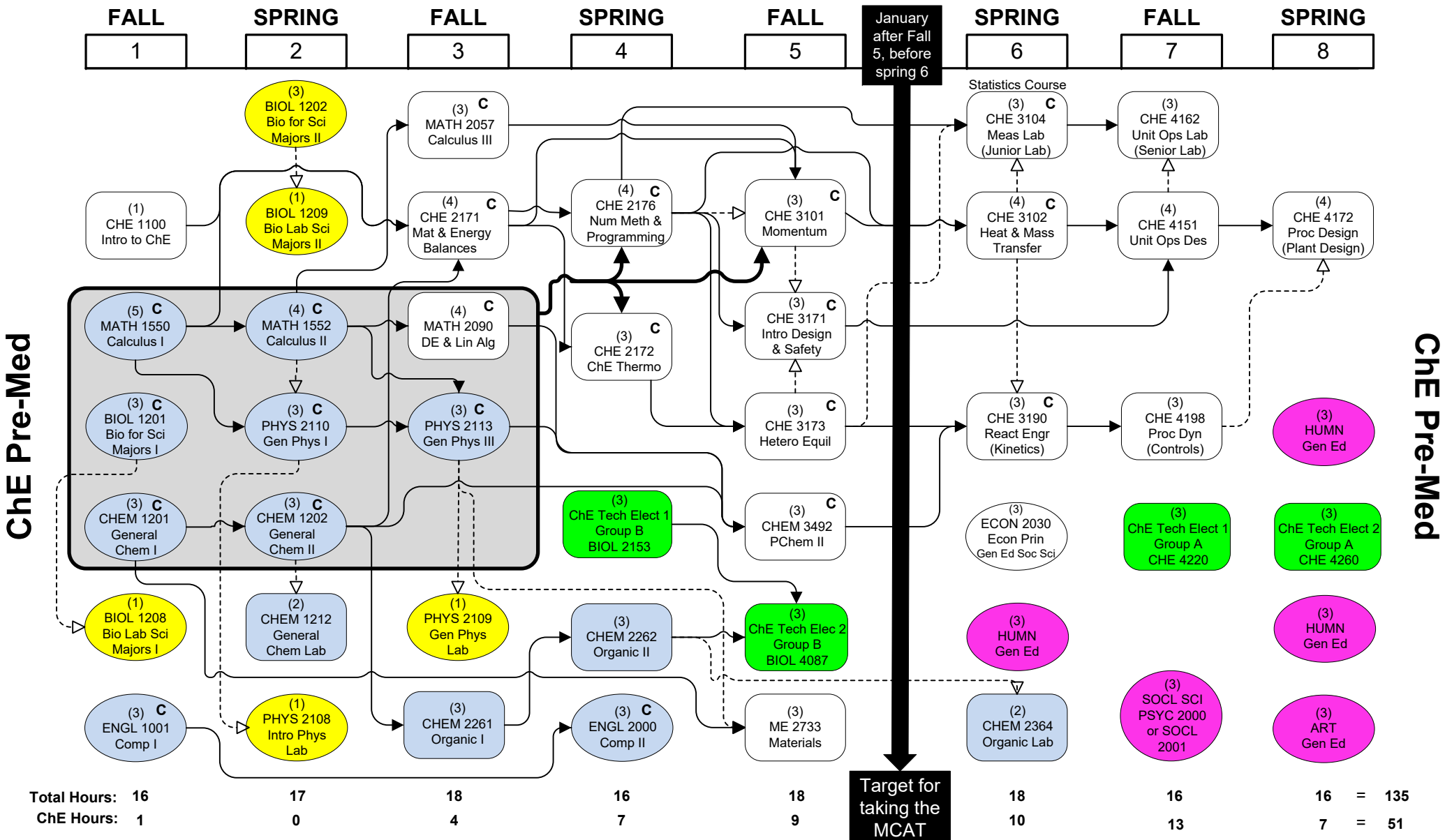


ChE Pre-Med Flowchart



- Required Pre-Med Courses that do not count towards a degree in ChE
- Required Pre-Med Courses
- Highly recommended Technical Electives
- Gen Ed courses should be chosen to enhance your Pre-Med program (see General Catalog and Academic Advisor)
- ➔ Credit required - - ➔ Credit or registration required

FLOWCHART LEGEND

C Students must earn a "C" or better in these courses to earn a passing grade and before registering for any subsequent course that requires one or more as a prerequisite

3307 Patrick Taylor Hall – ChE Main Office
<http://www.lsu.edu/eng/che/>

A grade of "C" or better is required in BIOL 1201, CHEM 1201, CHEM 1202, MATH 1550, MATH 1552, MATH 2090, PHYS 2110, and PHYS 2113 prior to enrolling in CHE 2172, CHE 2176, or CHE 3101.